

## Jefferson Park

The Upper Hunter Shire Council has prepared several Masterplans for Jefferson Park in the past and is now presenting a new draft Masterplan for the Jefferson Park Aberdeen, and we invite your feedback on the proposal.

Jefferson Park is the largest open space in Aberdeen and has a mix of formal sports fields, golf course, community, and public recreation facilities and hosts events such as the Highland Games. The park is located on MacQueen Street (New England Highway) and bound by the Hunter River and Abercairney Terrace.

The 27.6 hectare park is Crown Land, in the care and control of Council. The park shares its entrance and surrounds with the Aberdeen Bowling and Sports and Recreation Club which is privately owned.

## Masterplan Objectives

The purpose of the masterplan is to establish a clear vision to guide the future planning, provide new facilities and address operational needs at Jefferson Park,

The key objectives are:

1. Establish a strategic vision for Jefferson Park, Aberdeen.
2. Create welcoming, engaging, and inclusive active sports and recreation facilities for everyone.
3. Meet the needs and aspirations of residents, sports clubs, workers, and visitors.
4. Provide a flexible plan which caters for increased growth and adapts to changes in demographics, sports, and recreational needs into the future.
5. Make a flexible park which can accommodate events.
6. Establish McKinnon Field and facilities as the premier local Rugby League facility in the Upper Hunter Shire Council area.
7. Upgrade facilities to attract regional Rugby League games and host training clinics.
8. Respect, respond & enhance the unique riverside character, mature trees, and views.
9. Establish a framework that helps prioritise and improve facilities incrementally overtime to achieve a unified whole.
10. Harness Jefferson Park's position and make it an attractor to encourage people to stop and visit.
11. Consider and minimise life cycle cost, operational and maintenance needs.
12. Enable the Council and Sports Clubs to seek and secure funding grants.

## Community Input

Late last year we asked the community for feedback about the existing park; what you like about the space, what works well and what doesn't. Sports clubs and key user groups have also provided input about their needs and aspirations.

The feedback gave a clear message the park is well loved and is an important recreation, sports, and social space for the Aberdeen. The park and golf course instills a sense pride which the community welcomes visitors to stop, share and enjoy.

People like the relaxed open parkland character and mature trees, the broad range of recreation and sports activities, and to walk next to the Hunter River.

Feedback suggests the toilets, change rooms and facilities are dated and no longer meet contemporary needs and should be replaced. People also had concerns about children's safety around moving cars and the condition of the park.

People would like to see upgrades and new sports facilities for the local community and schools. A new playground and skate improvements, youth-orientated recreation facilities and multipurpose netball and basketball court were requested.

The communities' ideas and sport group input has helped the development of a draft masterplan for Jefferson Park. We're now seeking your feedback on the draft masterplan which will help further refine the plans. It is anticipated the final Masterplan will be adopted by Council in mid-2024.

## Draft Masterplan

Jefferson Park is beautiful with a golf course, sports fields and recreations facilities in a parkland setting amongst a mix of mature native and deciduous trees with expansive views to the river and surrounding farmland.

The draft masterplan proposes to adjust and enhance the McKinnon, Harrison, Gordon and Jack Walker Ovals/Fields to provide high quality sports and new club facilities, and additional recreation facilities. The establishment of the ring road around central precinct creates a central safe car-free zone around the sports and recreation facilities serviced by a low-speed two-way loop road and car parking next to the fields.

The proposed golf course upgrades seek to improve the experience, playability, and safety. New timber 'traps' will help reduce maintenance and create unique elements to enhance the game and character of the course. The use of mounds planted with groves of native Casuarina's will provide a barrier for golf balls leaving the course improving safety, providing shelter, and framing views.

The plan retains public recreation facilities in the northern precinct next to the Bowling Club where they can be easily accessed by the community. Further improvement into the future will include shade and seating, a new amenities block and extended parking facilities along the northern side along the new Loop Road. A new pedestrian concourse will link the Recreation area, Bowling Club, McKinnon, Harrison and Gordon ovals and their associated facilities together. The Concourse will be fully accessible and allow limited vehicular access for maintenance, deliveries and emergencies. Along its length trees will be planted creating a shady avenue, with seating included at strategic locations.

McKinnon, Harrison and Gordon ovals will be serviced by a new multipurpose building to be shared by all. The new Jefferson Pavilion will bring the facilities for these sports up to contemporary standards and provide multi-age and multi-gendered club and community facilities. McKinnon Oval will remain as the premier rectangular field with improved spectator viewing and game day facilities located in the grandstand. Gordon Oval will be formalised as the second rectangular field and Harrison Oval will remain as the number one oval for Cricket and rugby overflow.

The southern Jack Walker Ovals will focus on athletics with a new oval grass track set in a multi-use field which can accommodate future sports. On the northern side of the fields a new Pavilion will be built to accommodate sports day facilities and storage, with the individual athletics field facilities being located along the western edge.

Lighting will be provided for all of the sports fields and ovals, and the northern play and recreation zone.

The parks Event Mode capacity will be improved through the wider distribution of public amenities across the site, extended spill over parking and improved traffic flow through the inclusion of a second one way event access road linking in with Graeme Street.

The RV area and events camping will help encourage people to stay and support local businesses, events and sports carnivals. The new co-located amenities pavilion will also assist in servicing these events and people using the River Trail.

The river trail traverses the park for pedestrians, dog walking, jogging, and bike riders and additional pedestrian paths will improve access to it. The river trail will be improved through the location of picnic areas, shelters and more seating, the creation of a nature-based play facility in the south east corner will drawn in locals and school children. Engagement with the river is a key component of the Masterplan the plan embeds repair and replanting of the river corridor and sustainability improvements such as water reuse will enhance the visual amenity and environmental performance of the park.

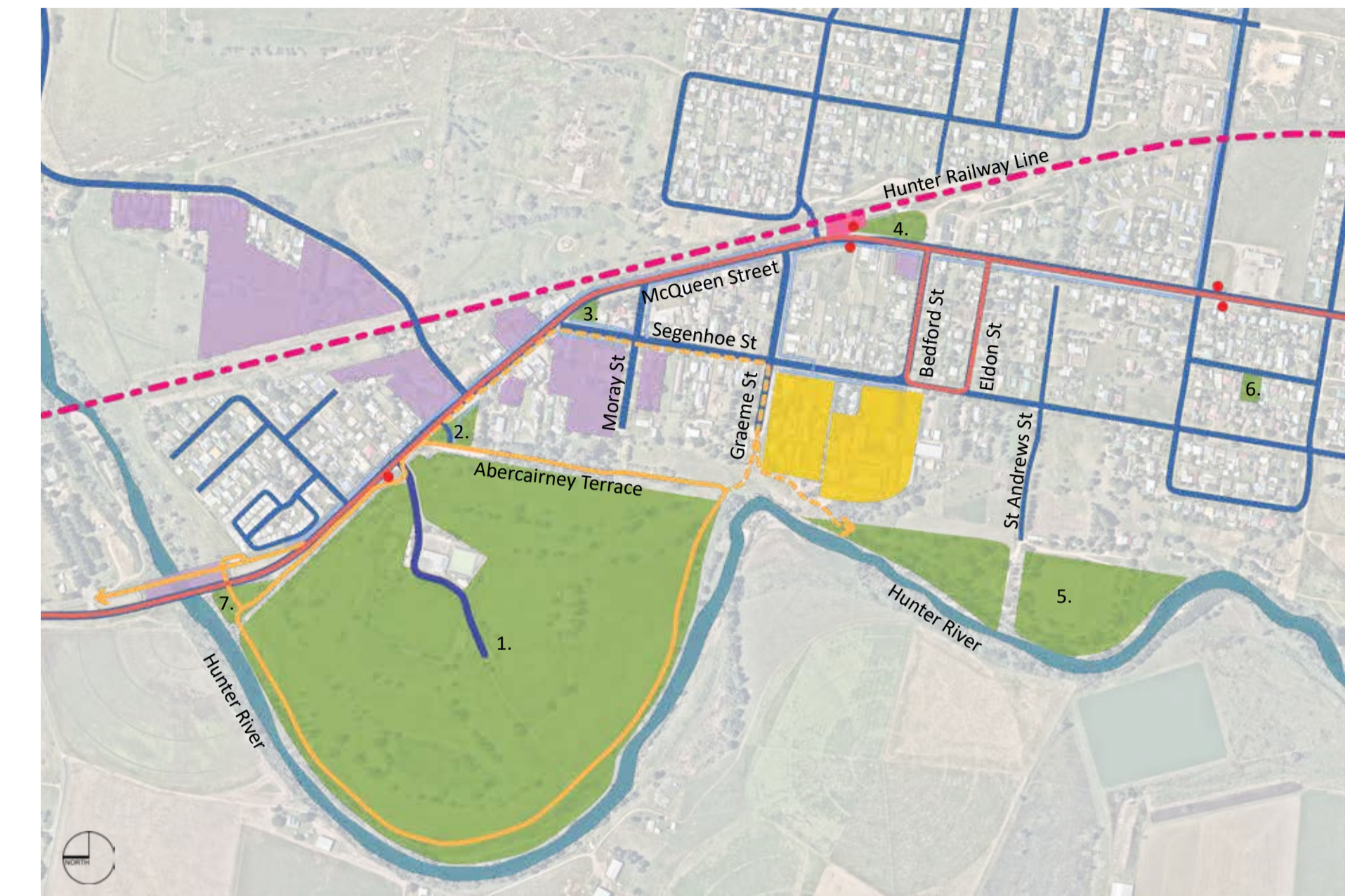
## Have Your Say

The Draft Masterplan Document is available on the Upper Hunter Shire Council website

1. Scan the QR code to view the full masterplan.
2. Review the draft masterplan.
3. Provide your feedback via the online form.



## Location



|                              |                             |                   |
|------------------------------|-----------------------------|-------------------|
| Public Open Space            | Key                         | Railway Line      |
| 1. Jefferson Park            | Road                        | Railway Station   |
| 2. Taylor Park               | Existing Footpath           | Public Open Space |
| 3. Dangar Park               | Proposed Shared Path (UHSC) | Schools           |
| 4. Aberdeen Jockey Club Park | Bus Route                   | Heritage          |
| 5. St Andrew's Reserve       | Bus Stop                    |                   |
| 6. Wattle Street Park        |                             |                   |
| 7. Riverside Park            |                             |                   |



Existing Entrance & Signage



Existing Amenities



McKinnon Oval



Hunter River

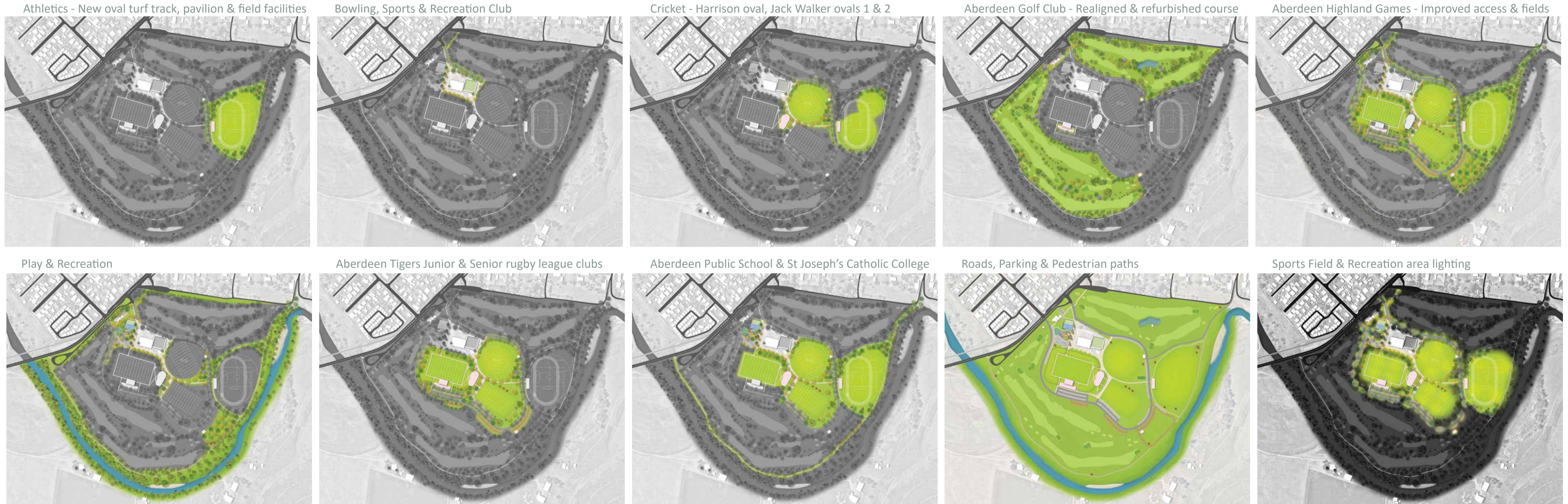


### Key

1. Main Entrance & Exit
  2. Aberdeen Bowls Club
  3. McKinnon Pavilion & Grandstand
  4. Jefferson Storage Shed & Workshop
  5. Jefferson Pavilion - Change Rooms, Kiosk, Amenities, Shelter
  6. Jack Walker Pavilion - Amenities, Shelter, Storage
  7. Harrison Pavilion - Amenities & Storage
  8. Men's shed
  9. Golf Starters Pavilion & Amenities
  10. Golf course
  11. Lake Jefferson - Park wide recycled water irrigation storage
  12. Multi-use courts - Basketball, Netball, Tennis, Football, etc
  13. Jefferson Play & Recreation area - Skate, Play, Parcor, Amenities
  14. Aberdeen Bowling Green
  15. McKinnon Oval - Rectangular Field sports
  16. Harrison Oval - Oval Field sports
  17. Gordon Oval - Rectangular Field Sports
  18. Jack Walker Ovals - Athletics & Multi or Future use fields e.g. Soccer, AFL, Cricket, etc
  19. RV & Camping Area & Overflow carpark
  20. River Pavilion - Amenities
  21. Jefferson Loop Road - 2 Way Access Road
  22. Event Link Road - 1 Way Access Road & Pedstrain/cycle path
  23. Permanent Carparking
  24. Overflow carparking
  25. Jefferson Pedestrian Concourse - Pedestrian only zone
  26. Pedestrian Link Paths - Connecting people to sites across the park
  27. Nature Playspace
  28. River Trail
- Shelters
  - Deciduous Trees
  - Evergreen Trees

# Jefferson Park

Sports & Recreation Components



Play Components

Jefferson Park Play & Recreation

1. Multipurpose court 1 - Tennis, Football, Etc
2. Multipurpose court 2 - Basketball, Netball, Etc
3. Playspace
4. Ninja Warrior & Exercise
5. Parcor
6. Skate
7. Learn-to-ride
8. Picnic Tables & Pergola
9. BBQ's & Picnic Tables
10. Seating
11. Amenities
12. Parking
13. Jefferson Concourse
14. Pedestrian Link Paths
15. Pedestrian Crossing

■ Shelter

Nature Playspace

1. Nature Play area: Climbing Logs, Steppers, Mud Pit, Animal Play Sculptures
2. Shelter
3. Link access paths
4. Jack Walker Ovals
5. River Trail

Precedents

